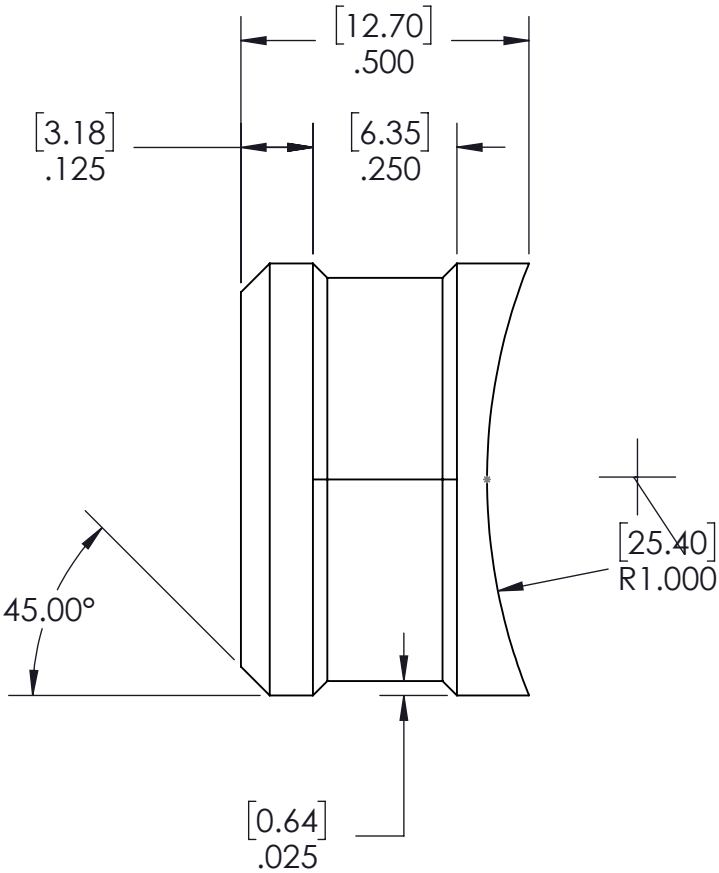
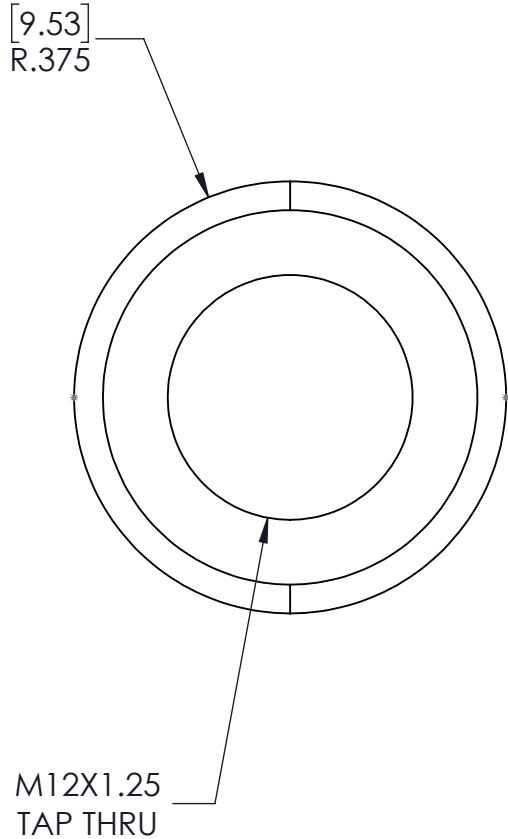


| REVISIONS | | |
|-----------|------------------------|-----------|
| REV. | DESCRIPTION | DATE |
| A | Updated drawing format | 10/9/2024 |

Deburr all sharp corners



GENERAL TOLERANCE [mm]

| OVER-TO | MACHINING PUNCHING | BENDING | ANGLE |
|----------|--------------------|---------|-------|
| 0.5-6 | ±0.1 | ±0.3 | ±1° |
| 6-30 | ±0.2 | ±0.5 | ±30' |
| 30-120 | ±0.3 | ±0.8 | ±20' |
| 120-400 | ±0.8 | ±1.2 | ±10' |
| 400-1000 | ±1.2 | ±2.0 | ±5' |

| NAME | DATE |
|----------------------|-----------|
| Y.Kimura | 10/9/2024 |
| CHECKED | |
| APPROVED | |
| 3RD ANGLE PROJECTION | |
| UNIT | |
| [mm] INCH | |

| MATERIAL |
|----------|
| 303 SS |
| FINISH |
| |



| SIZE | PART # | REV |
|---------------------------------------|--------------|--------------|
| A | OXYB12X125SS | A |
| SCALE: 3:1 Machine Shop Drawing Sheet | | SHEET 1 OF 1 |

THE INFORMATION CONTAINED IN THIS DRAWING IS THE SOLE PROPERTY OF YOSHIMURA R&D. ANY REPRODUCTION IN PART OR AS A WHOLE WITHOUT THE WRITTEN PERMISSION OF YOSHIMURA R&D IS PROHIBITED.